



£389,950

## MALIBU PROJECT - BLOCK B - 2 BEDROOM PENTHOUSE APARTMENTS

<https://cyprusify.com>

Malibu project, in Tatlisu, is set on 16000 sq-m of prime real estate just two minutes walk from the beach boasting unparalleled sea and mountain views. Construction started in April 2022 and will complete in approximately 36 months. The project consists of; 18 ground floor studio apartments surrounding the main pool/restaurant area 18 double height [...]

- 2 beds
- 2 baths
- Apartments
- For Sale
- Active
- 85 m<sup>2</sup>



**Call us now**

Email: [contact@cyprusify.com](mailto:contact@cyprusify.com)

# Cyprusify

---

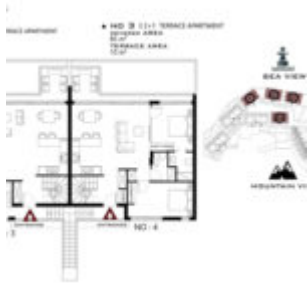
## Building Details

**Floor covering:** Tile

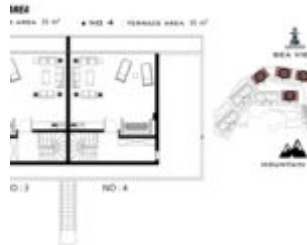
**Roof:** Tile

---

## Floor Plans



Block Plan



Roof Terrace Plan



Site Plan

---

## Amenities & Features

**Features:** Communal Swimming Pool, Roof Terrace, Terrace



**Call us now**

Email: [contact@cyprusify.com](mailto:contact@cyprusify.com)

# Cyprusify